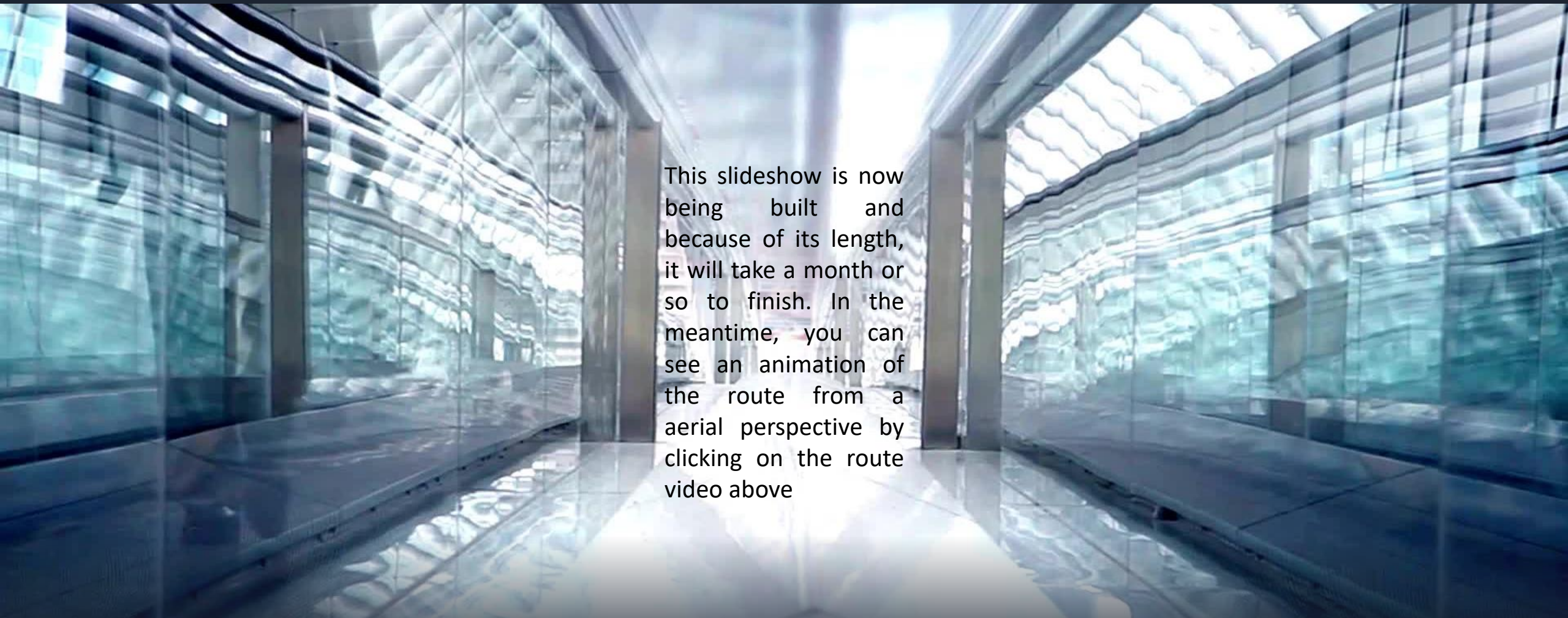


# 125-mile I-70 Corridor from Colfax to Eagle County Airport

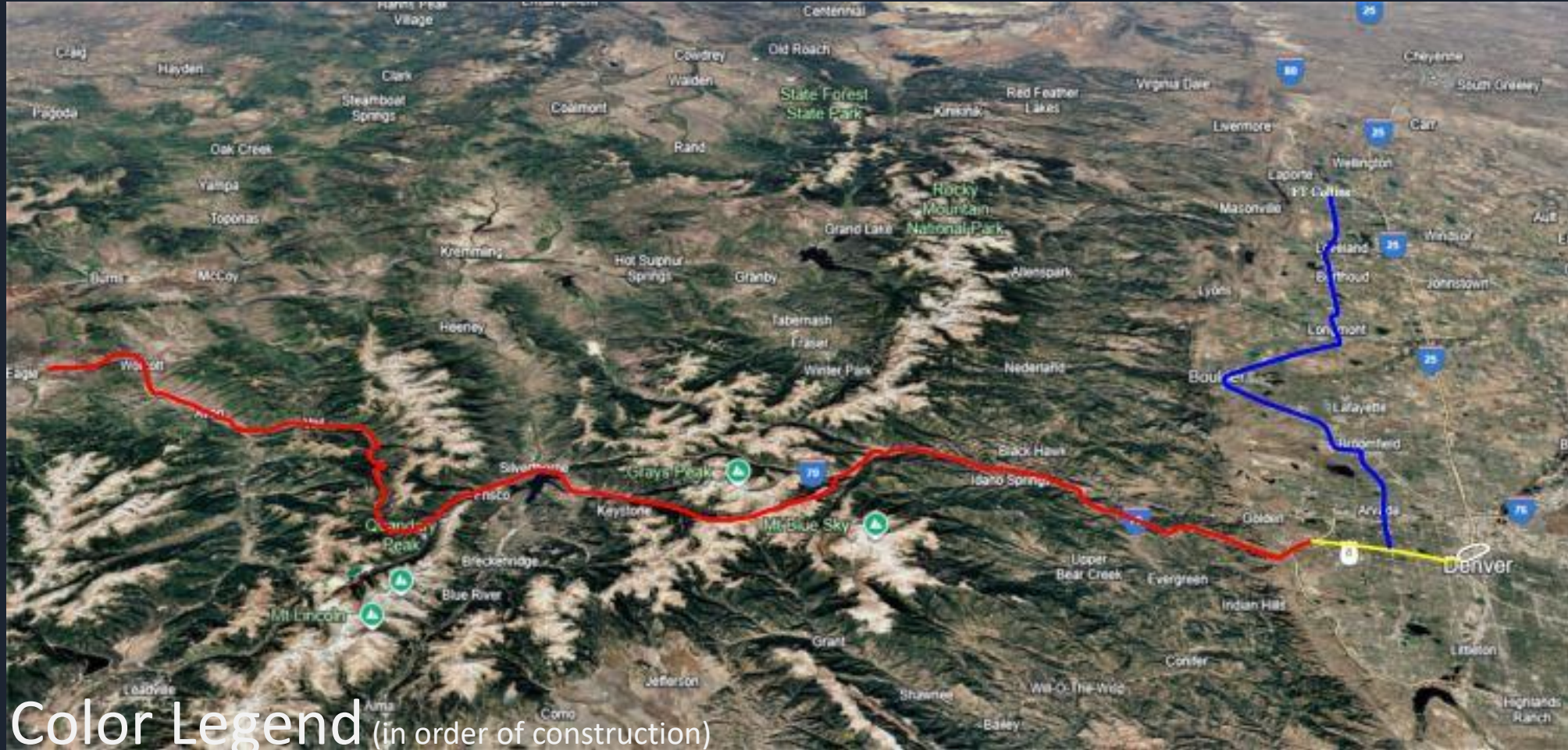
Click on [leg 4 route video](#)



This slideshow is now being built and because of its length, it will take a month or so to finish. In the meantime, you can see an animation of the route from a aerial perspective by clicking on the route video above



# Skyways 210-mile Colorado Corridor \$4.3 Billion



## Color Legend (in order of construction)

Leg # 1 White is Platte Valley downtown 5-miles \$125 million

Leg #2 Yellow is Colfax Corridor 8-miles \$275 million

Leg #3 Blue is Front Range Corridor 70 miles \$1.5 Billion

Leg #4 Red is I-70 Mtn Corridor 125-miles \$2.5 Billion

Each leg has a subscription fee for unlimited ridership and when riders go from one leg to another there is a trip fee



# Each Station will have a Local Circulator Path for Ground Based Driverless Cars and Vans shown by the Red Loops. These could be Proved by Districts

## Colorado Interstate 70 Route for 126 miles from DIA to Avon (optional to Eagle County Airport)

A "Local Loop" is illustrated for each town along the I-70 Route that chooses to build a local circulator for collecting and distributing traffic

[Construction Costs \(click here\)](#)

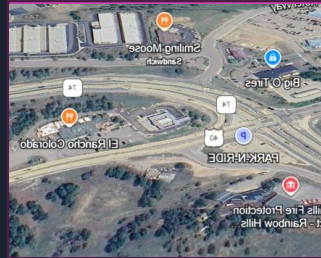
[Pricing \(click here\)](#)

[Economic Feasibility \(click here\)](#)



## 12 Main Stations/Loops

1. Evergreen
2. Idaho Springs/ Central City
3. Georgetown
4. Loveland
5. Arapahoe Basin
6. Keystone
7. Dillon
8. Breckenridge
9. Copper Mt
- 10 Vail-
- 11 Beaver Creek
- 12 Eagle County Airport



#4

#5

Click on an Interactive link for a  
closeup of each town



# #1 Evergreen Station

The town of Evergreen is about 7- miles away from the I-70. This is a good example of using driverless cars and vans to connect from the I-70 station to the town as shown in the orange dashed line.



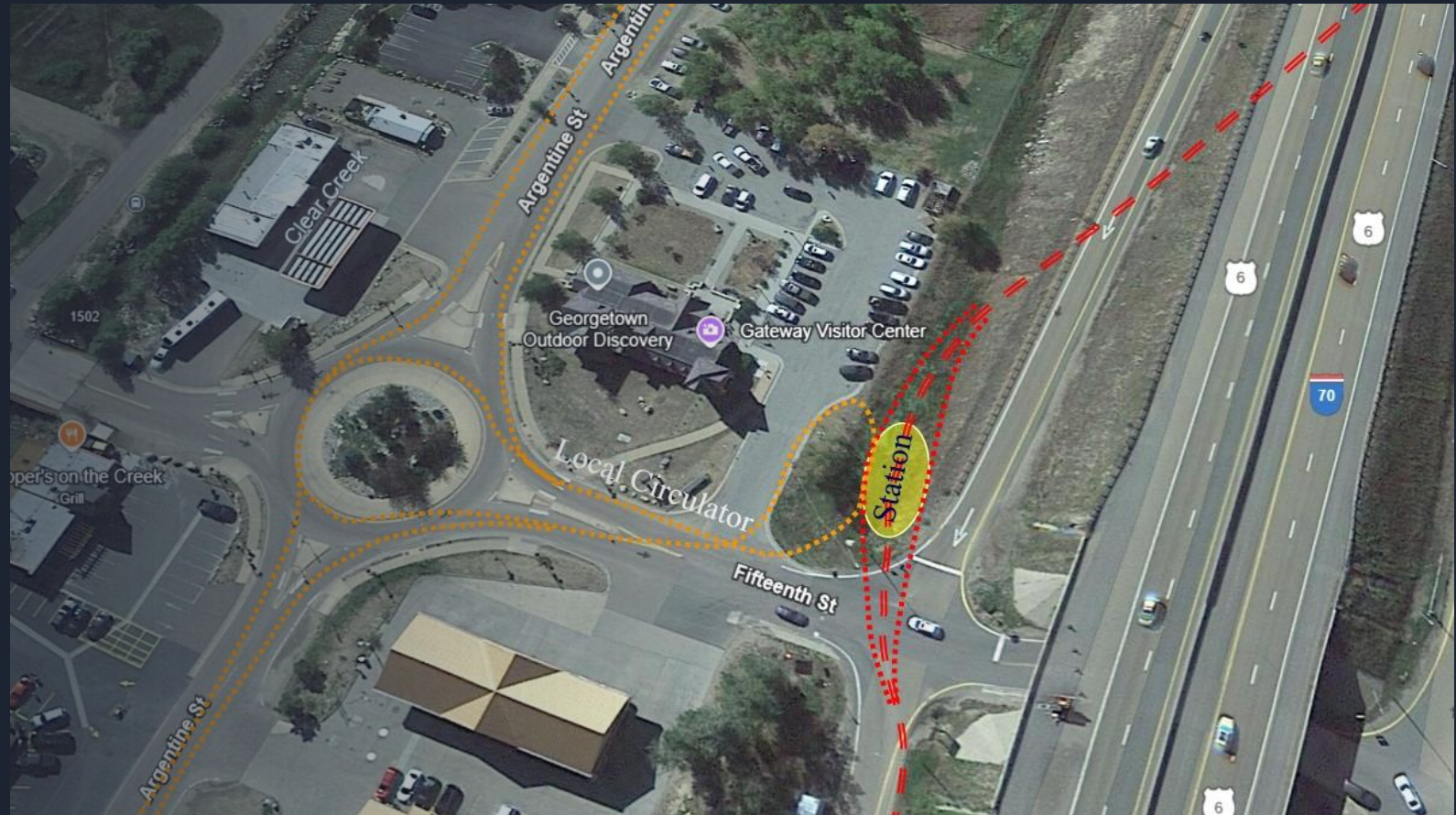


# #2 Idaho Springs Station





# #3 Georgetown Station





# #4 Loveland Station





# #5 Arapahoe Basin Station





# #6 Keystone Station



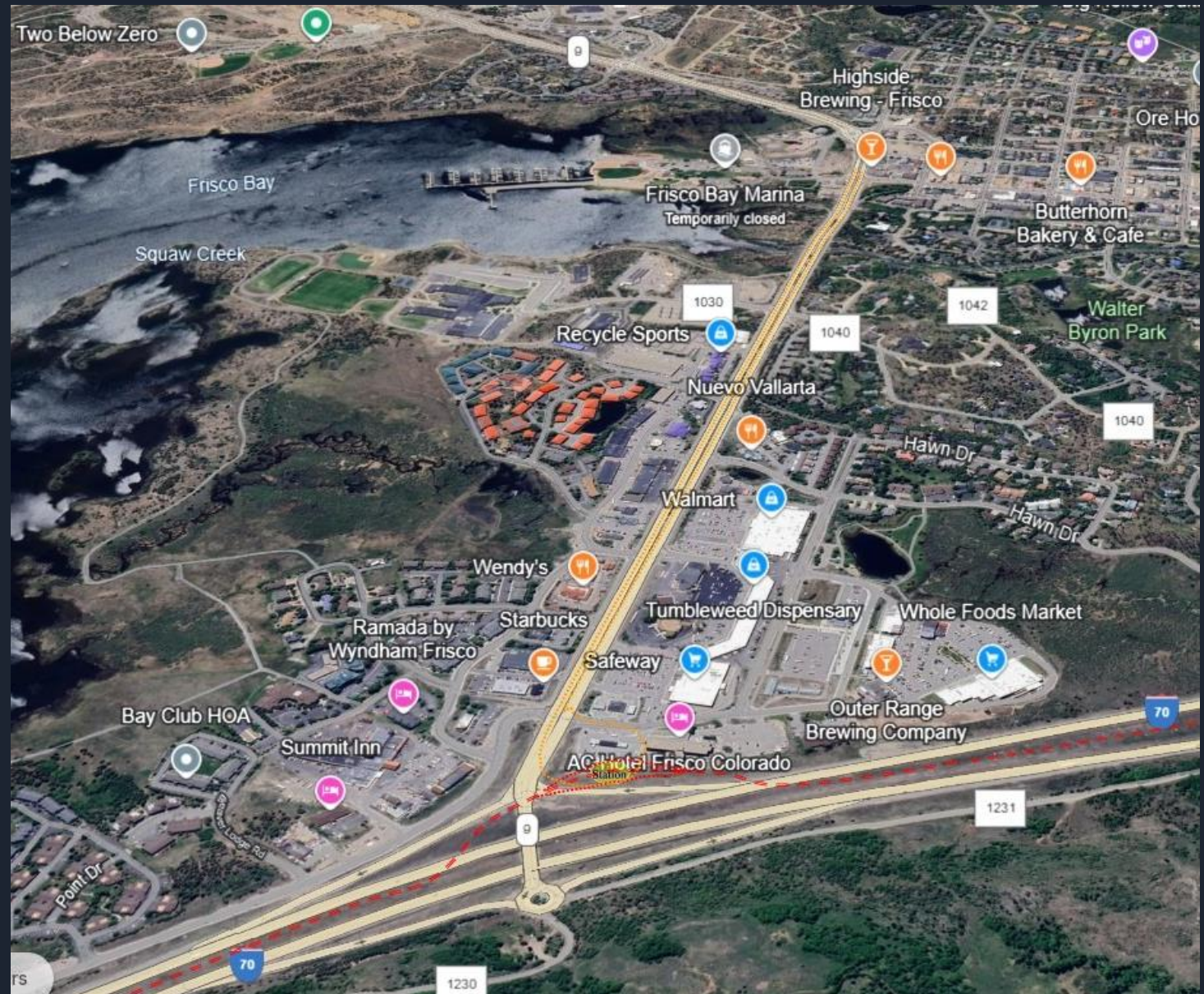


# ● #7 Dillon Station





# # 8 Frisco Station





# #9 Copper Mtn Station





# #10 Vail Station and Local Circulator

Over 30 car companies have produced driverless car experiments and want to compete in this field. Vail is a good example of using them for local circulators connecting the neighborhoods to the station as shown in orange dashed line. The neighborhood could provide a Special district to fund and manage this circulation.









# #12 Eagle County Airport Station

